

SECTION 22, T. 6 N., R. 1 W., S. L. B. & M.

TAXING UNIT: 25, 43

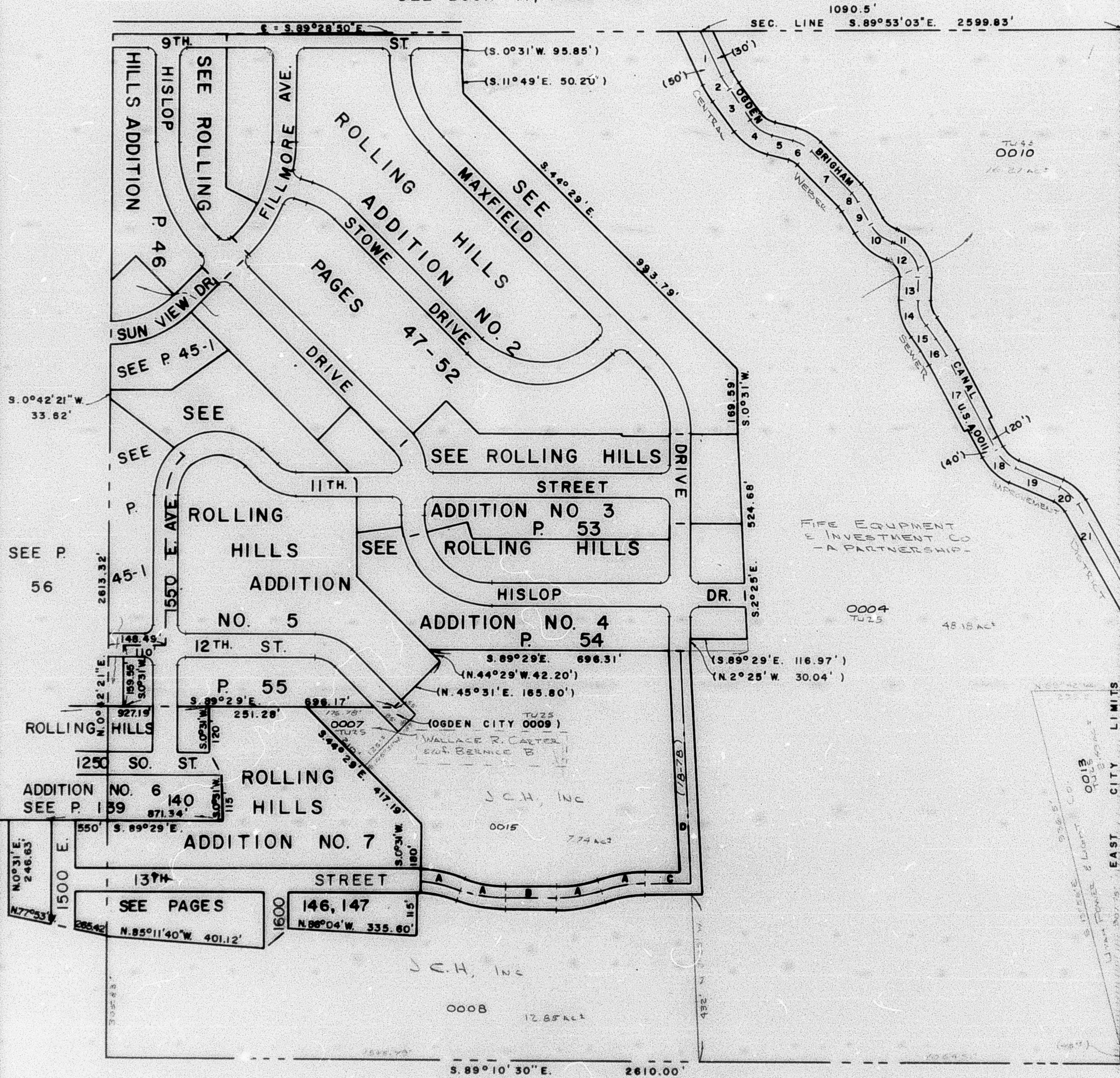
IN OGDEN CITY

PREFIX: 13-045

SCALE 1" = 200'

ALSO SEE PAGE 45-1

SEE BOOK II, PAGE 105



DATA

- 1- N. 24° 47' W. 130.5'
- 2- R=200' L=37.0'
- 3- N. 35° 23' W. 93.9'
- 4- R=100' L=71.9'
- 5- N. 76° 33' 30" W. 52.8'
- 6- R=100' L=56.8'
- 7- N. 44° 00' 30" W. 150.3'
- 8- R=100' L=28.9'
- 9- N. 28° 34' W. 62.5'
- 10- R=100' L=75.0'
- 11- N. 71° 34' W. 3.6'
- 12- R=90' L=115.3'
- 13- N. 1° 51' E. 60.0'
- 14- R=100' L=67.7'
- 15- N. 36° 58' W. 42.7'
- 16- R=300' L=51.2'
- 17- N. 27° 11' 30" W. 271.4'
- 18- R=100' L=68.2'
- 19- N. 66° 15' 30" W. 122.3'
- 20- R=100' L=65.4'
- 21- N. 28° 45' 30" W. 163.5'

PARCEL No.

- 0004
- 0007, 0008
- 0009
- 0010
- 0011, 0013
- 0014
- 0015

SEE P. 74

ROAD DATA

- A Δ=19° 28'
R=349.79'
L=118.84'
T=60.00'
LC=118.27
- B S. 89° 29' E.
130.00'
- C S. 89° 29' E.
117.62'
- D N. 2° 25' W.
592.85'